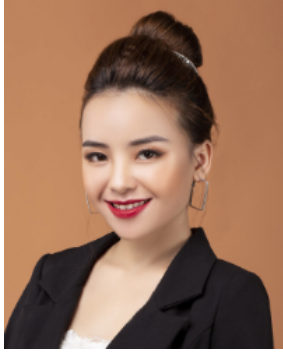


## Japanese in Marshall Islands



Source: N-Y-C - Pixabay

Population: **300**

World Popl: **119,242,000**

Total Countries: **48**

People Cluster: **Japanese**

Main Language: **Japanese**

Main Religion: **Buddhism**

Status: **● Unreached**

Evangelicals: **0.50%**

Chr Adherents: **1.00%**

Scripture: **Complete Bible**

[www.joshuaproject.net](http://www.joshuaproject.net)



*"Declare His glory among the nations." Psalm 96:3*