

The Bawm of Bangladesh



The Bawm live in southeast Bangladesh, with many living in various places of Bandarban district but about one-third living in parts of Rangamati district. The Bawm people speak their own language, and they have some written materials in their language such as the Bible, hymns, small books, etc. 100% of the Bawm call themselves Christian. Most of them are jhum (slash-and-burn shifting agriculture) farmers. Some of them are teachers, NGO workers, or pastors, preaching the Gospel to the Mru, to the Khumi, and to other ethnic communities of the Chittagong Hill Tracts.

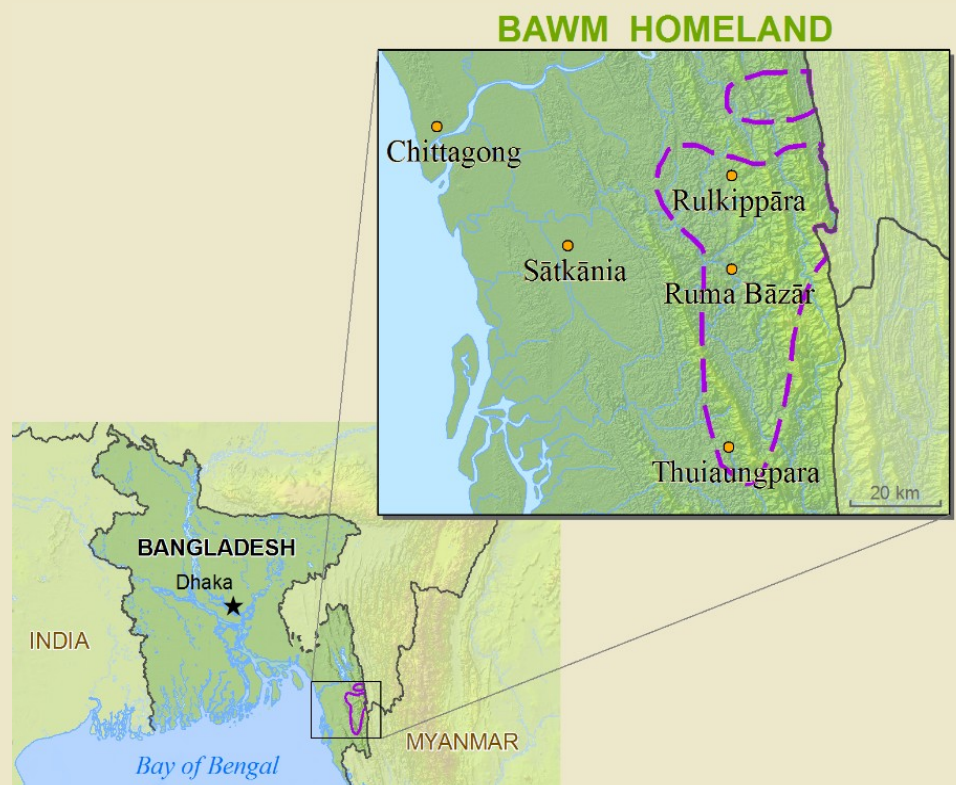
Primary Religion:
Christianity

Disciples (Matt 28:19):
70%

Churches:
Most villages

Scripture Status (Matt 28:20):
Complete Bible

Population (date):
10,000 (2007)



The Bawn of Bangladesh

Have They Heard The Gospel?

Call Themselves Christian	100%
Believe In Jesus As God And Only Savior	70%
Believe In The Local Traditional Religion	0%
Have Not Heard Who Jesus Is	0%

The Bawn of Bangladesh

Group Description

Geography & Environment

Location

The Bawm live in the hilly areas. Their villages may be near roads, along riverbanks, or along the edge of the hills. A number of Bawm villages are situated in the valley.

Literacy

Percent Monolingual

10%

Literacy Attitude

Very Receptive

Literacy Program

Yes

Comment

The literacy rate among Bawm speakers is nearly 100% in their mother tongue and 35% in Bangla.

Economics

Subsistence Type

Pastoralists

Occupation

Farmers, NGO workers, businessmen, teachers, pastors

Income Sources

Handicrafts and crops that they produce in their field.

Trade Partners

Bengalis and other ethnic community people such as the Marma and Khumi

Products / Crafts

Products: rice, ginger, turmeric, vegetables, pineapple, oranges, etc. Crafts: bags, long skirts, shawls, etc

Modernization / Utilities

A few have Western musical instruments, computers, TVs, motorbikes, cell phones, etc.

Community Development

Health Care (Quality)

Fair

Diet (Quality)

Fair

Water (Quality)

Poor

Comment

Most of them are living in very remote areas and using water from springs, lakes, and rivers.

Electricity

Few villages have electricity

Transportation

Public vehicle, walking, boat

Energy / Fuel (Quality)

Very Good

Family Structures

Patrilineal

Neighbor Relations

Very good relationship with neighbors

Authority / Rule

Father is the head of the family

Cultural Change Pace

Slow

Identification With National Culture

District

Self Image

Prestigious

Celebrations

Since they are Christian they celebrate Christian festivals.

Recreations

Bible study, sitting together, discussing, hunting, cooking

Attitude To Outsiders

Somewhat receptive

Attitude To Change

Somewhat receptive

The Bawn of Bangladesh

Society & Culture

Family Structures	Patrilineal
Neighbor Relations	Very good relationship with neighbors
Authority/Rule	Father is the head of the family
Cultural Change Pace	Slow
Identification With Culture	Distinct
Self Image	Prestigious
Celebrations	Since they are Christian they celebrate Christian festivals
Recreations	Bible study, sitting and chatting, hunting, cooking
Attitude To Outsiders	Somewhat receptive
Attitude To Change	Somewhat receptive

Youth

Labor and tasks (6-12 year olds)	Staying home, babysitting, helping parents, household work
----------------------------------	--

Education

Comment (Primary Schools)	Almost every village has a primary school
Comment (Primary Schools)	Almost all school-aged children go to school
Language Of Instruction Early Years	Bangla
Comment	Children learn to read and write Bawm in Sunday School

The Bawn of Bangladesh

Status of Christianity

Church Growth

Comment on Church Growth There is a church in almost every Bawm village

Religion And Response

Attitude To Christianity Very Receptive

History Of Christianity In Group

Year Began 1921
By Whom North East India General Mission

Scripture

Translation Status Completed
 Comment Bible is in print form
Recording Yes
Literature Yes
Radio No
TV No

Mission & Churches

Organization Name Evangelical Christian Church
Country of Origin Bangladesh
Year Started 1965